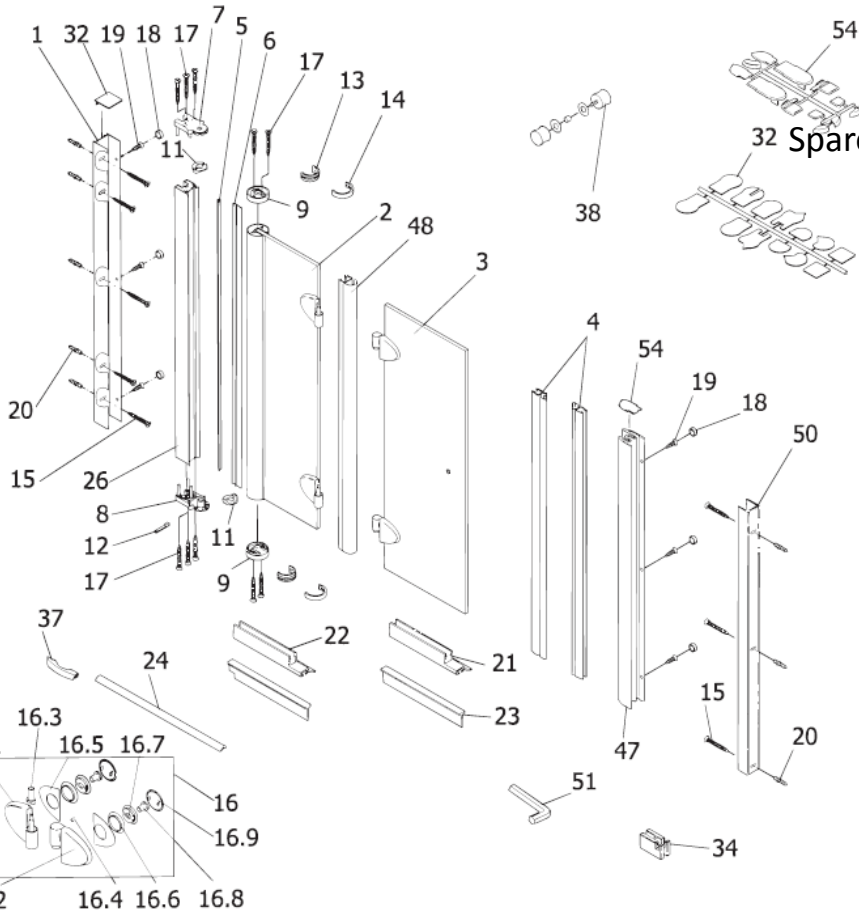


Exklusiv – Pivoting Bi-Fold Door



32 Spare Part Request Form – Fax Back to 01283 584994

HSK - SPARE PART - Request Form



Ref No. -	Date -
-----------	--------

CUSTOMER DETAILS

Customer		Retailer	
Name		Name	
Address		Address	
Post Code		Post Code	
Contact No.		Contact No.	

PRODUCT DETAILS

Product		Product No.	
Part No's Req'd			
Inst. Instr. No.			

OFFICE INFORMATION ONLY

Chargeable?		Inv. No.	
Sent Via		Sent Date	
HSK Conf. No.		Conf. Date	
UK Stock Qty		Order Ref	

- | | | | |
|------|--|------|--|
| Pos. | | | |
| 1 | 1 x compensating profiles | 36.7 | 4 x inlay |
| 2 | 1 x side panel | 36.8 | 4 x fixing screw M8 |
| 3 | 1 x door | 36.9 | 4 x cap |
| 4 | 2 x magnetic strip 45° | 37 | 10 x countersunk head screw 3,5 x 25 mm |
| 5 | 1 x inner sealing | 38 | 6 x screw cover |
| 6 | 1 x sealing outwards | 39 | 6 x countersunk head screw 3,5 x 9,5 mm |
| 7 | 1 x lower part of pivot bearing right | 40 | 8 x wall plug S6 |
| 8 | 1 x lower part of pivot bearing left | 41 | 1 x water-repellent profile 1 x left / 1 x right |
| 9 | 2 x lower part of pivot bearing | 42 | 1 x water-repellent profile 1 x left / 1 x right |
| 11 | 2 x curve part | 43 | 2 x pull-in sealing |
| 12 | 1 x twist stop | 44 | 1 x aluminum sealing profile |
| 13 | 2 x inside cover | 45 | 1 x side panel profile |
| 14 | 2 x outside cover | 46 | 1 x shield range |
| 15 | 8 x countersunk head screw 4,2 x 32 mm | 47 | 2 x assembly aid 2 |
| 16 | 2 x complete hinge | 48 | 1 x cap for sealing-profile |
| 16.1 | 2 x part of the hinge for fixed panel | 49 | 1 x handle complete |
| 16.2 | 2 x part of the hinge for the door | 50 | 1 x magnet retaining profile |
| 16.3 | 2 x bearing bush | 51 | 2 x sealing profile vertical |
| 16.4 | 2 x fixing screw M3 x 3 mm | 52 | 1 x compensating profiles |
| 16.5 | 4 x sealing | 53 | 1 x hexagonal wrench SW 4 |
| 16.6 | 4 x disk protection | 54 | 1 x shield range |