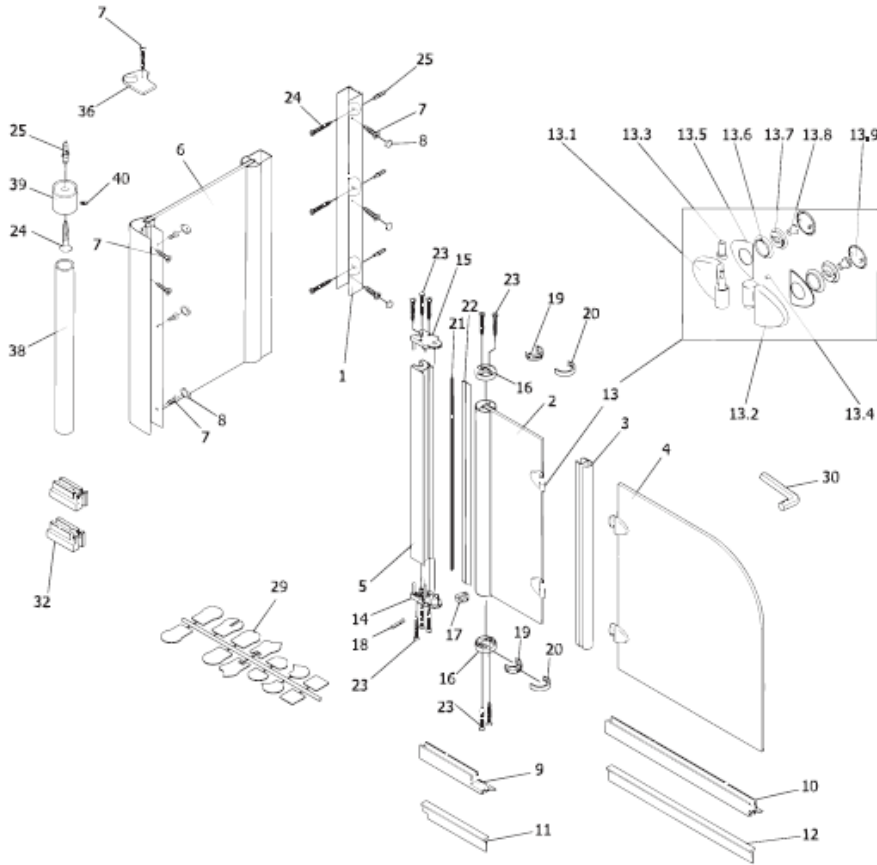


Bath Screen – Exklusiv (2 part) & optional Side Panel

Spare Part Request Form – Fax Back to 01283 584994



HSK - SPARE PART - Request Form



Ref No. -	Date -
-----------	--------

CUSTOMER DETAILS

Customer		Retailer	
Name		Name	
Address		Address	
Post Code		Post Code	
Contact No.		Contact No.	

PRODUCT DETAILS

Product		Product No.	
Part No's Req'd			
Inst. Instr. No.			

Pos.

- | | | | | | |
|------|---|------|---------------------------------------|----|---|
| 1 | 1 x wall connection profile | 13.3 | 2 x bearing bush | 22 | 1 x sealing outwards |
| 2 | 1 x door outside | 13.4 | 2 x fixing screw M3 x 3 mm | 23 | 10 x countersunk head screw 3,5 x 25 mm |
| 3 | 1 x sealing profile vertical | 13.5 | 4 x cap | 24 | 4 x countersunk head screw 4,2 x 32 mm |
| 4 | 1 x door | 13.6 | 4 x disk protection | 25 | 4 x dowel S6 |
| 5 | 1 x side panel profile | 13.7 | 4 x inlay | 29 | 1 x shield range |
| 6 | 1 x side panel | 13.8 | 4 x attachment screw M8 | 30 | 1 x hexagonal wrench |
| 7 | 9 x countersunk head screw 3.5 x 9,5 mm | 13.9 | 4 x cap | 32 | 2 x assembly aid 1 |
| 8 | 6 x cap for countersunk head screw | 14 | 1 x over part of pivot bearing left | 36 | 1 x cap |
| 9 | 1 x water-repellent profile 1 x left, 1 x right | 15 | 1 x lower part of pivot bearing right | 38 | 1 x support 25 x 2 mm |
| 10 | 1 x water-repellent profile 1 x left, 1 x right | 16 | 2 x upper part of pivot bearing | 39 | 1 x turnable |
| 11 | 1 x pull-in sealing | 17 | 1 x rising butt mechanism | 40 | 1 x stud M4 x 4 mm |
| 12 | 1 x pull-in sealing | 18 | 1 x twist stop | | |
| 13 | 2 x complete hinge | 19 | 2 x inside cover | | |
| 13.1 | 2 x part of the hinge for fixed panel | 20 | 2 x outside cover | | |
| 13.2 | 2 x part of the hinge for the door | 21 | 1 x inner sealing | | |

OFFICE INFORMATION ONLY

Chargeable?	Inv. No.
Sent Via	Sent Date
HSK Conf. No.	Conf. Date
UK Stock Qty	Order Ref